

shifted to a Facebook group.

[www.facebook.com/groups/alburywodonga\\_bonsai/](https://www.facebook.com/groups/alburywodonga_bonsai/)



## Contacts:

President: Theo Panagopoulos

Ph: 0418 568 601

Email: [theo.pana71@gmail.com](mailto:theo.pana71@gmail.com)

Secretary: Ben Spiller

Ph: 0490 374 193

Email: [bonsaialburywodonga@gmail.com](mailto:bonsaialburywodonga@gmail.com)

Treasurer: Chris Mayers

Ph: 0413 220 800

Email: [chris.may13@bigpond.com](mailto:chris.may13@bigpond.com).

Newsletter: Neil Padbury, Ph: 0493 413

450 Email [neil@shibuibonsai.com.au](mailto:neil@shibuibonsai.com.au)

Website: Albury Wodonga bonsai have

Albury Wodonga Bonsai Society meets 4<sup>th</sup> Tuesday each month (except December) at [North East Trades and Labour Council](#) offices at 1/7 Thomas Mitchell Drive, Wodonga. Click on the link for a map.

## Next Meeting:

September 24, 2024 @ 7:30pm

Topic: Grafting/ Preparing to show

**Next meeting:** Grafting can be used in a number of ways to improve bonsai. Find out some of the ins and outs of grafting for bonsai with a practical demo of some methods.

Show season is rapidly approaching. Our club uses the Albury Ag show as one of our major public displays each year. Tonight some of our experienced members will pass on some hints on how to make your bonsai look good so everyone can contribute some trees to our displays and/or the judged sections.

**Last meeting:** Nikki brought in some great looking prototype bonsai pots to show members. She's come up with some really nice glazes and some useful sized/shaped pots. It is great to have a local potted making pots. If the ready made sizes and shapes aren't quite right for your special tree you can discuss custom made pots as Theo has done with Nikki and get something made that's just right.

The club workshop saw most members busily working on something. A few were happy to demonstrate on their own trees, others sought guidance on either design or

techniques to take their trees further. I forgot to take photos again!

## **Business:**

Remember the local shows coming up where there's the opportunity to show off your trees or promote the club and bonsai to members of the public.

Myrtleford show Saturday Oct 26 2024

Albury show - Saturday 2<sup>nd</sup> and Sunday 3<sup>rd</sup> November 2024

## **Club calendar for 2024**

<b>January 24</b>	Figs and other summer tasks
<b>February 27</b>	Watering systems
<b>March 26</b>	Creating jin and shari
<b>April 23</b>	Wiring and wiring technique
<b>May 28</b>	Pests & Disease/ What to look for in nursery stock
<b>June 25</b>	Potting media
<b>July 23</b>	Collecting wild trees.
<b>August 27</b>	Club Workshop night
<b>September 24</b>	Grafting/ Preparing for a show
<b>October 22</b>	Potting media
<b>November 26</b>	End of year social function and planning for the coming year

## **Bonsai Events:**

**October 5th and 6<sup>th</sup> 2024** – BSV show and sales, Box Hill town hall.

**October 5th and 6<sup>th</sup> 2024** – Goulburn bonsai show and sales, Auburn st, Goulburn, NSW.

**October 12th and 13<sup>th</sup> 2024** - Canberra bonsai society annual show. **October 19<sup>th</sup> and 20<sup>th</sup> 2024** - Wauchope Bonsai Annual Show.

**October 19<sup>th</sup> and 20<sup>th</sup> 2024** – School of Bonsai annual show, Sydney. **October 26<sup>th</sup> 2024** – Myrtleford Ag show, includes bonsai display and competition. **November 2<sup>nd</sup> and 3<sup>rd</sup> 2024** – Albury Show. Competitive bonsai classes and our club display. This is one of our best opportunities to promote bonsai to our local community. Please consider contributing some trees and/or some time over the weekend.

**November 8,9,10 2024** – Newcastle Bonsai Society annual exhibition at Club Macquarie, Argenton.

**May 16<sup>th</sup> – May 19<sup>th</sup> 2025** – 37<sup>th</sup> National Bonsai Convention. Hosted by Canberra Bonsai Society. Canberra Rex Hotel. Registrations now open [2025 Bonsai Convention](#)

Chris found this online article from N.Z. Geographic magazine about bonsai in New Zealand and sent it in so you can read what's happening over the ditch. This link should take you straight to the site.

<https://www.nzgeo.com/stories/little-beauties/>

## **This month at Shibui Bonsai:**

Spring seems to have come early this year. The tridents suddenly started to sprout leaves so I had to rush to replant the deciduous trees in the grow beds. Now they are all ready to grow again this summer.

Most evergreens seem to have no problem with transplant a little later than deciduous so, after the deciduous were replanted, I moved onto digging and potting junipers, pines and a few Chilean myrtles.

I've also repotted a few pines and junipers in the nursery.

The longer days and more sun means some watering has been required this month and I expect the need for water to increase in the coming weeks. Spring seems to be a critical time for water. Not only are days longer and getting warmer but increased activity in the trees means they start to use more water to grow and to cool themselves. Spring has traditionally been the time I seem to lose most bonsai - usually to dehydration because I don't change watering patterns quick enough. Try to get into the habit of checking soil moisture every day from now on. And don't make the mistake

of thinking a light shower will do it for you. My experience is we need to get more than 6 mm of rainfall to properly wet a bonsai pot so please check your trees, even after rain, to make sure they make it through Spring.

Spring is also peak flowering bonsai season and more flowers have been opening each day in the Shibui nursery.

An old crab apple:

Other flowering species to try as bonsai include:

Plums, wisteria, azalea, Chaenomeles (Japanese flowering quince), forsythia, Cotoneaster, hawthorn.

A number of our Australian natives flower well as bonsai, including acacia, callistemon, melaleuca, kunzea.



Spring is also a great time to graft some species. Grafting for bonsai is sometimes maligned and some grafts are way too obvious for good bonsai but what the detractors seem to fail to realise is that many grafted bonsai are not obvious so we assume the trees are not grafted. Here's a Japanese maple. The top was

4 | Page

grafted on this tree many years ago. The lower trunk and first branch are from the original trunk. The upper part of this tree was grafted on in order to get rid of a very straight trunk.

Another reason to graft is when it is very difficult to propagate the tree from cuttings or seed is unobtainable. For the first time in a number of years I had some spare Japanese black pine seedlings so I grafted a few more Japanese white pines onto the JBP root stock.

Because the bark of black and white pines are quite different I try to graft the scions as low as possible. This way the different bark types is hidden in the nebari of the future bonsai.

First cut is in the

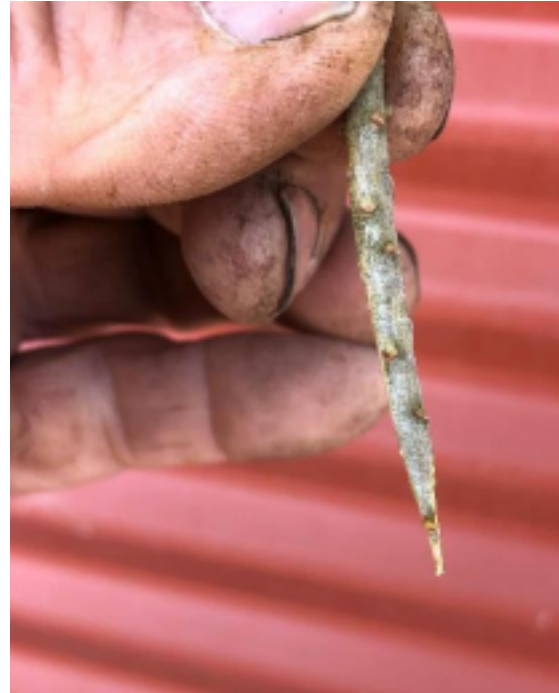


rootstock.

Then a shoot is cut from the white pine and prepared to insert into the stock.



Strip the lower needles and make 2 cuts to form a wedge at the base of the scion.



The scion is placed so that the cambium layers on both stock and scion are closely aligned. This usually means placing the scion toward one side of the cut in the stock.



Now the graft union is wrapped tightly to hold it in place and to exclude as much air and water as possible while the cuts heal.



Finally, because this is an evergreen graft I protect the scion from dehydration. Ziplock bags are just one of the ways of doing this. The bag allows light to keep the needles healthy but retains moisture and humidity so the grafted scion doesn't dry out before the graft heals and water starts to flow from the stock roots.

More on grafting at our meeting on Tuesday evening.



From our facebook page this month

Theos chinese elm in our newfound potter  
moneypenny wren

Beautiful pot theo tree isnt to bad either.

